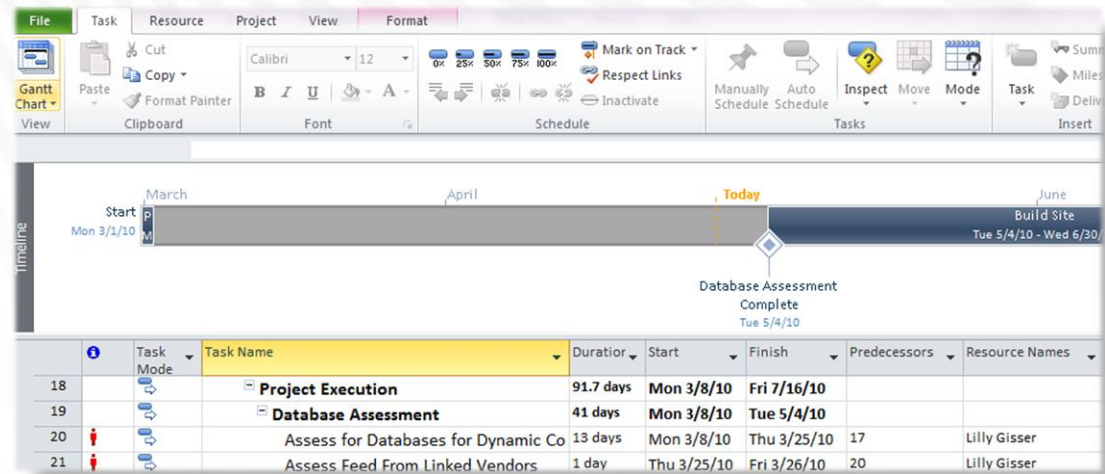


*New Features of  
MS Project 2010  
and  
MS Project Server 2010*

Presented by Sheri Trine

# What's New in Project 2010

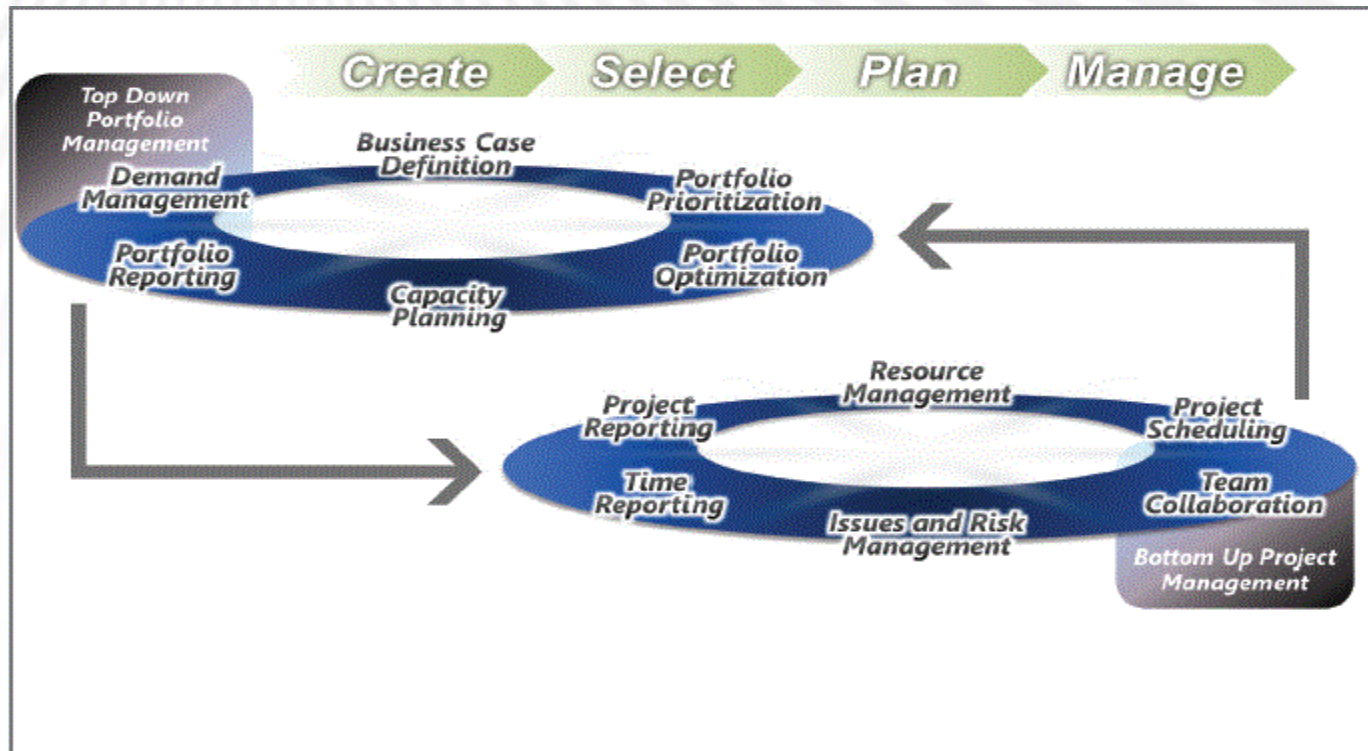
- Fluent User Interface (Ribbon)
- User-Controlled Scheduling
- Timeline View
- Team Planner\*
- Inactivate a task\*



\* Denotes available in MS Project **Professional** 2010 Only

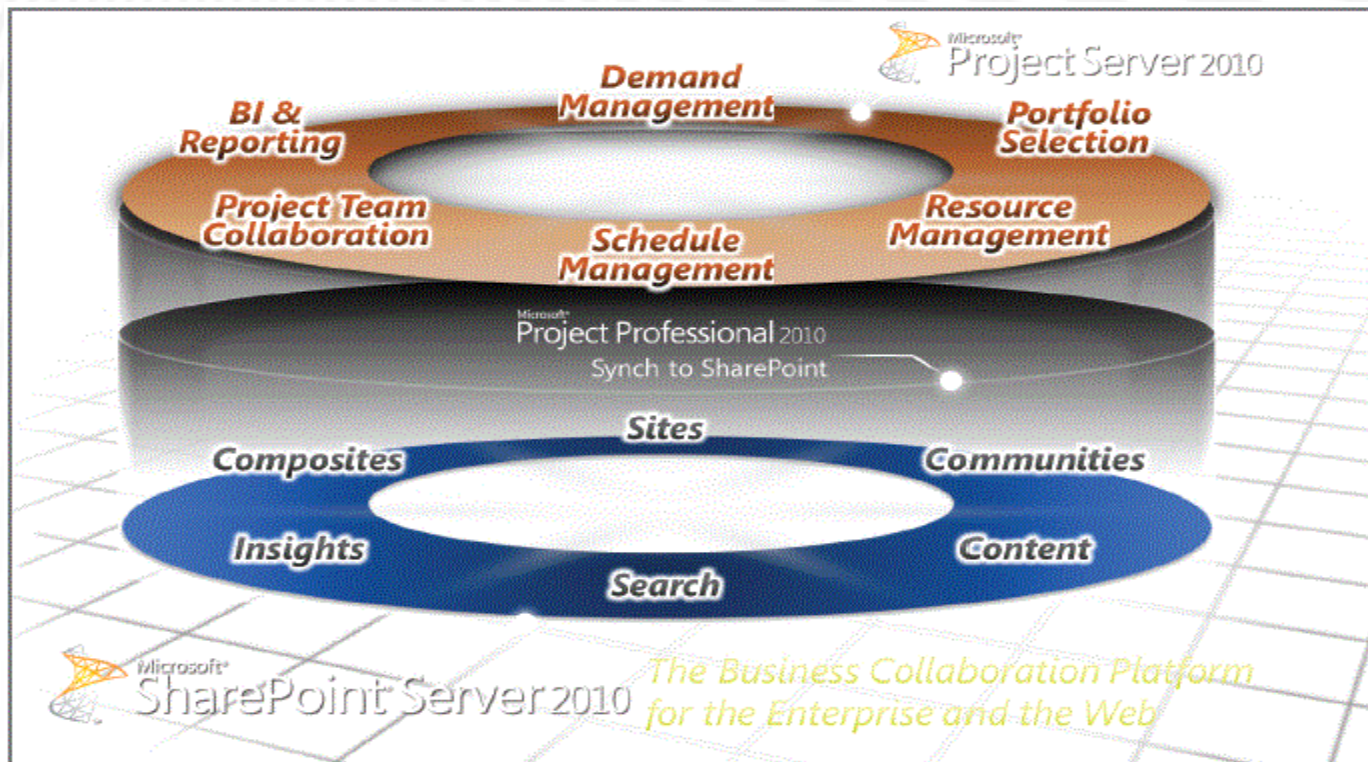
# What's New in Project Server 2010

- Unified Project & Portfolio Management



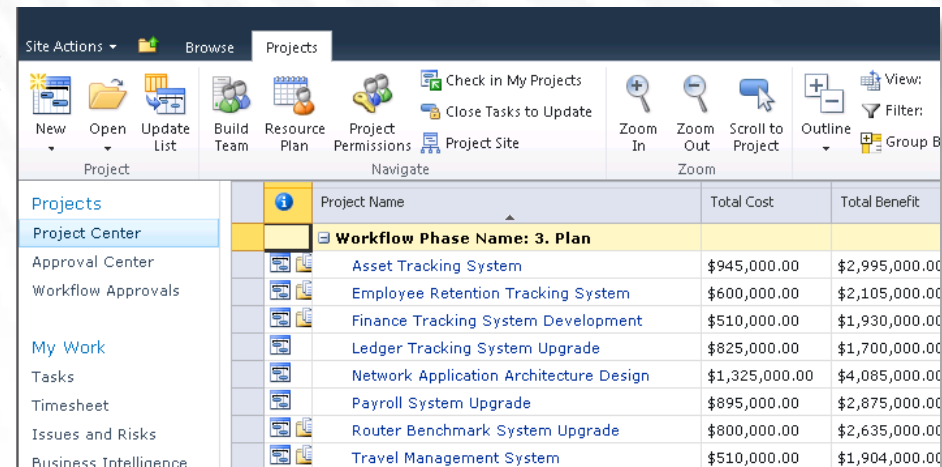
# What's New in Project Server 2010

- Built on SharePoint Server 2010.



# What's New in Project Server 2010

- Fluent User Interface (Ribbon)
- Project Initiation & Business Case Development
- Portfolio Selection
- Web-Based Project Editing
- Single Entry Timesheet
- Delegates

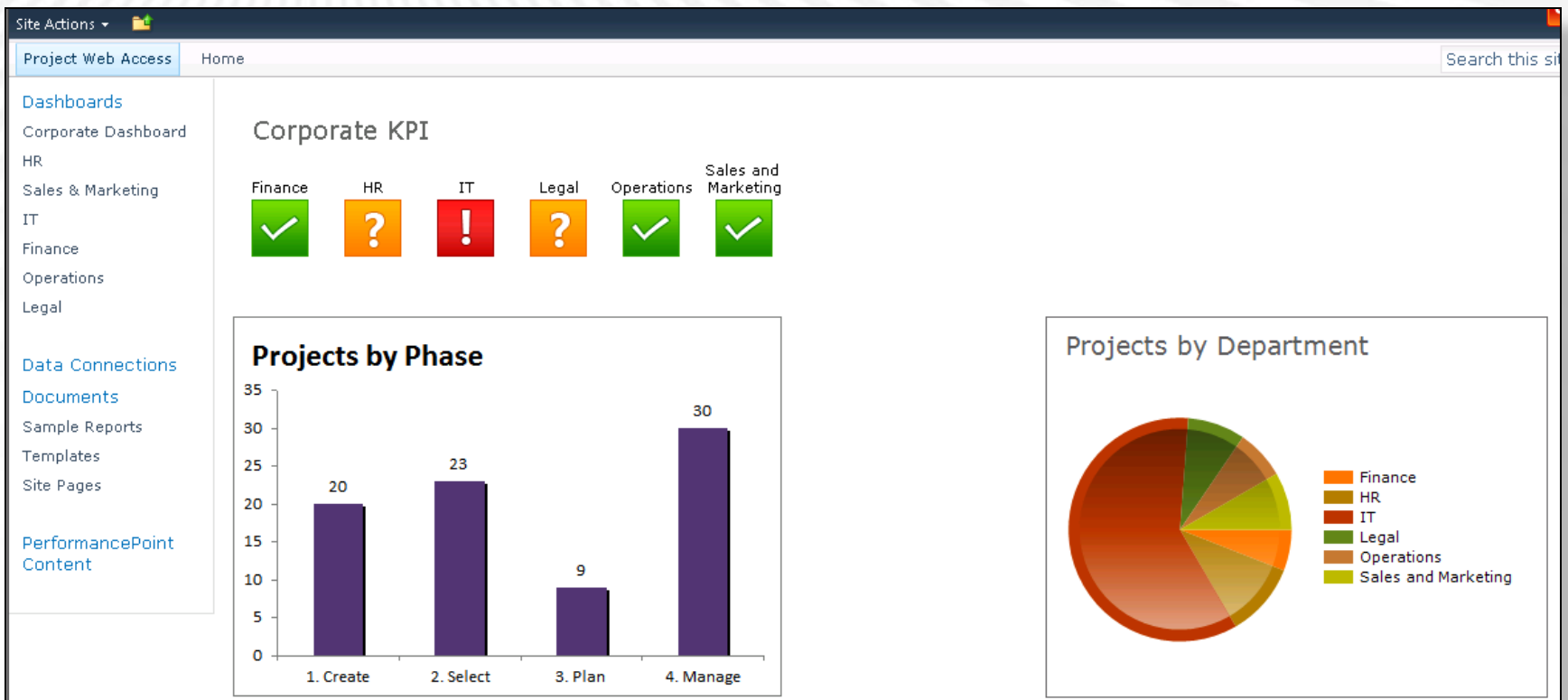


The screenshot displays the Project Server 2010 interface. At the top, there is a ribbon with tabs for 'Site Actions', 'Browse', and 'Projects'. The 'Projects' tab is active, showing a ribbon with various icons for project management tasks such as 'New', 'Open', 'Update List', 'Build Team', 'Resource Plan', 'Project Permissions', 'Project Site', 'Check in My Projects', 'Close Tasks to Update', 'Zoom In', 'Zoom Out', 'Scroll to Project', 'Outline', 'View', and 'Filter'. Below the ribbon is a table with the following data:

Project Name	Total Cost	Total Benefit
<b>Workflow Phase Name: 3. Plan</b>		
Asset Tracking System	\$945,000.00	\$2,995,000.00
Employee Retention Tracking System	\$600,000.00	\$2,105,000.00
Finance Tracking System Development	\$510,000.00	\$1,930,000.00
Ledger Tracking System Upgrade	\$825,000.00	\$1,700,000.00
Network Application Architecture Design	\$1,325,000.00	\$4,085,000.00
Payroll System Upgrade	\$895,000.00	\$2,875,000.00
Router Benchmark System Upgrade	\$800,000.00	\$2,635,000.00
Travel Management System	\$510,000.00	\$1,904,000.00

# What's New in Project Server 2010

## Enhanced Reporting and Business Intelligence



# DEMONSTRATION

# Stay Connected with Springhouse



[www.linkedin.com/companies/201280](http://www.linkedin.com/companies/201280)

facebook

[www.facebook.com/springhouseeducation](http://www.facebook.com/springhouseeducation)



[www.twitter.com/SpringhouseEduc](http://www.twitter.com/SpringhouseEduc)

Join in the conversation  
Philly TechFest hashtag #phtf10



Spend an hour over lunch (12pm – 1pm ET) with a live presentation and demonstration of topics such as:

- SharePoint Document Libraries
- Project 2007/Project Management Tips & Tricks
- Windows 7 for IT Pros
- Office 2007 and Office 2010
- and many more

Just visit [www.Springhouse.com/iLearn](http://www.Springhouse.com/iLearn) to learn more and register for a FREE webcast!

## Upcoming iLearn Topics

<b>What's New in Microsoft Office 2010</b>	5/17/2010
<b>An Overview of ITIL</b>	5/20/2010
<b>IIS 7.0 for Developers</b>	6/1/2010
<b>Project Management Tips and Tricks</b>	6/14/2010
<b>Common Tasks with PowerShell</b>	6/24/2010
<b>Microsoft Excel 2007: Tips and Tricks</b>	6/28/2010

# You're Learning...

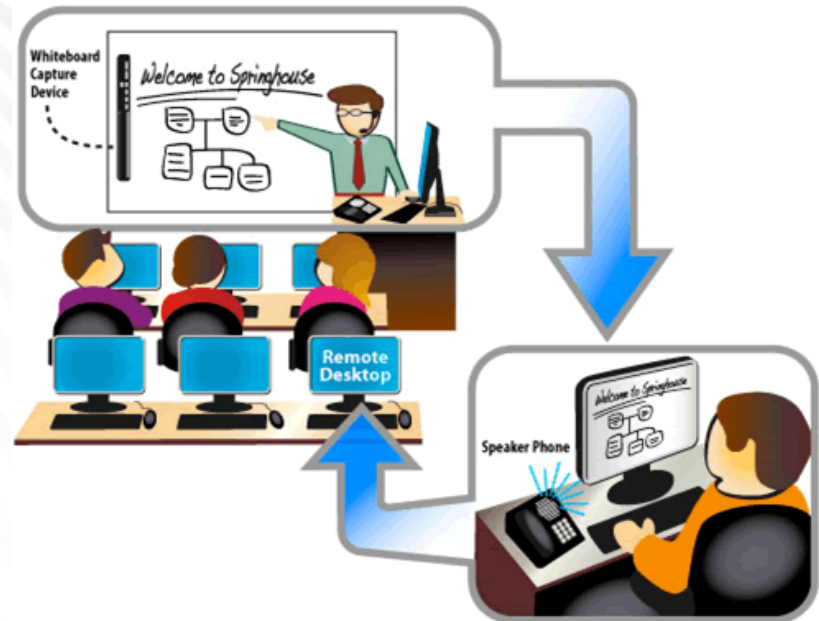
@Home @Work @Springhouse

[www.springhouse.com](http://www.springhouse.com)



There is no need to travel to take a live, instructor-led class with Springhouse. You can stay at home or at your office and join a class via **Springhouse CONNECT**, our Remote Learning System.

- Participate in the live instructor-led classroom demonstrations and labs
- Interact with the instructor and students, via high-quality conferencing equipment
- View the Instructor's Presentation, Whiteboard and Demonstrations
- Get remote hands-on help from the Instructor during labs and demos



Take **ANY** class via **Springhouse CONNECT**. Learn more at [www.Springhouse.com/CONNECT](http://www.Springhouse.com/CONNECT)



**Buy 2 Classes, Get 1 Free! Or Buy 1 Class, Get 2nd for Half Price!**

### **What's In It For Me?**

- You'll Gain New Skills!
- You'll Save Money!
- You'll Increase Your Productivity!

### **How Do I Take Advantage?**

Visit [www.Springhouse.com](http://www.Springhouse.com) and select any course scheduled to run between **May 31, 2010** and **September 6, 2010**.

Enroll in the course using

**Promo Code: SUMMER2010**

A Springhouse representative will contact you to register for the other discounted course.

Springhouse is making it easier for you and your organization to gain new skills and increase productivity while maximizing your budget.

For full details of the program visit [www.Springhouse.com/Summer-of-Learning](http://www.Springhouse.com/Summer-of-Learning)

The Windows 7 logo, featuring the four-pane window icon in blue, green, red, and yellow, followed by the text "Windows 7" in white.

# Upcoming Windows 7 Migration Clinics

Exton, PA – May 13<sup>th</sup>

Malvern, PA – June 29<sup>th</sup>

Reston, VA - May 14<sup>th</sup>

Richmond, VA – June 2<sup>nd</sup> & 11<sup>th</sup>

Washington, DC – June 30<sup>th</sup>

For full event details and registration  
visit [www.springhouse.com/events](http://www.springhouse.com/events)

## Event Overview

This one-day **Windows 7 Migration Clinic** dives deep into the migration and deployment planning strategies for Windows 7. Through a series of in-depth presentations and exercise demonstrations, we will highlight the new tools and technologies designed to enable successful Windows 7 migrations and deployments.